



GAS CONDENSING BOILERS

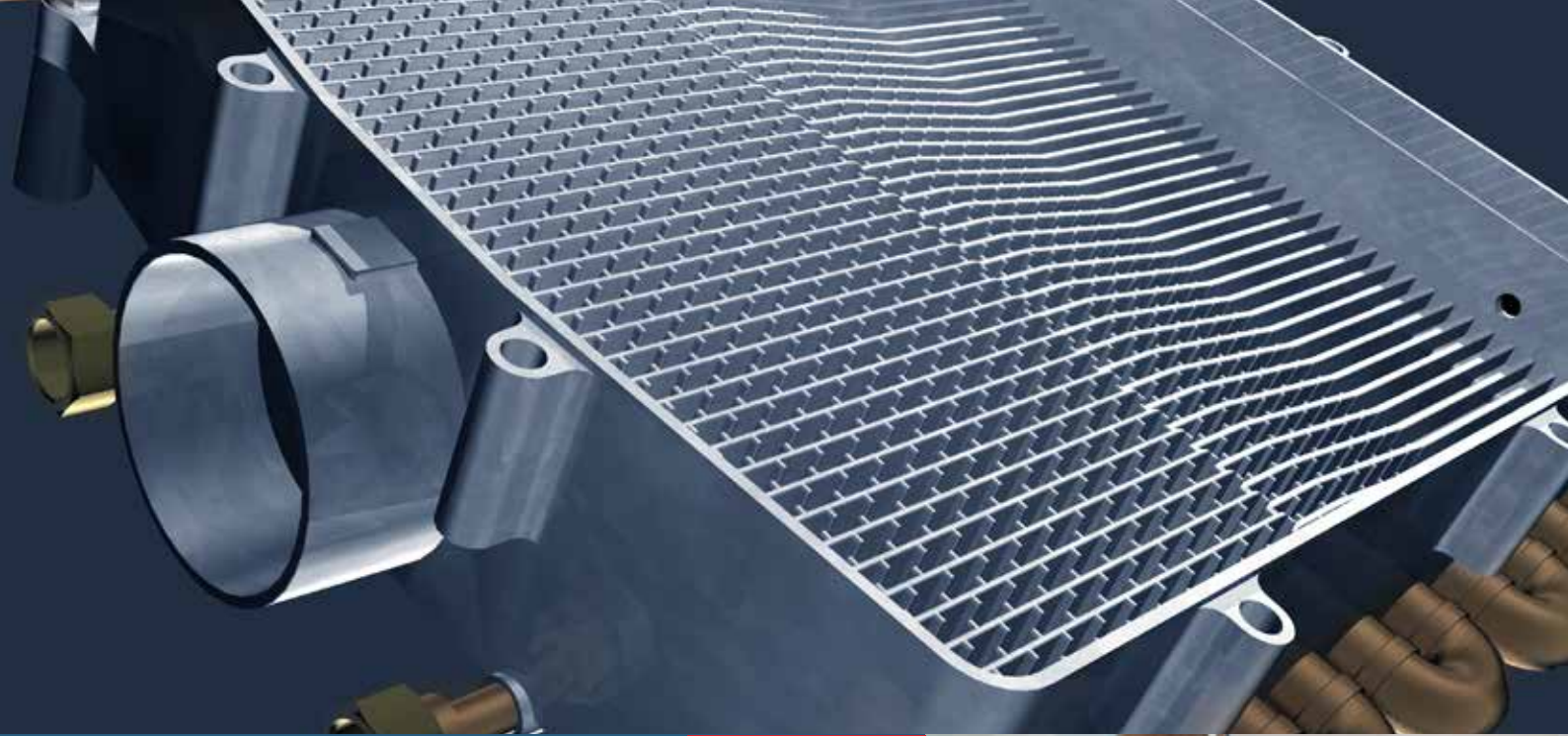
RELIABILITY
AND PEACE
OF MIND



THE DAIKIN GAS CONDENSING BOILERS: A NEW GENERATION OF HIGH-EFFICIENCY BOILERS FOR TOP COMFORT AND LOW COSTS

The quality solution
for reliability, flexibility and
total peace of mind.





How does a condensing boiler work?

The exhaust gases from the boiler pass through a condenser to recover the heat from the water vapour and this is used to pre-heat the incoming water, so reducing the amount of fuel used.

The result is that condensing boilers are around 20% more efficient than standard boilers.





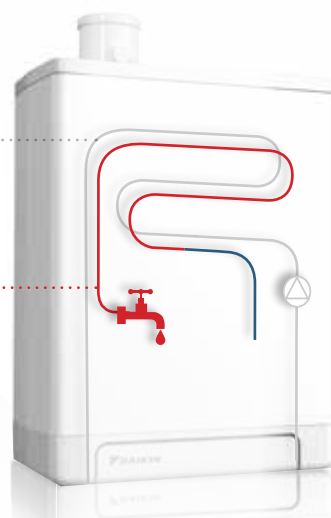
Low costs for BOTH heating and hot water thanks to new dual heat exchanger

In a traditional boiler, domestic hot water is heated by means of an intermediate heat exchanger, resulting in heat losses and thus lower efficiencies. The unique 2-in-1 heat exchanger in the Daikin condensing gas boiler allows both the heating water and the domestic hot water to be pre-heated directly by the hot flue gases. This means that also for domestic hot water, the maximum heat is recovered through condensation leading to the highest efficiencies possible for combustion. In addition, since there are less parts, the Daikin condensing gas boiler is more reliable and easier to service.

1. With the first heat exchanger, maximum efficiency is reached when heating your home through condensation of the flue gases

[Unique Daikin feature]

2. Also when producing hot water the efficiency is maximised thanks to condensation with the unique second heat exchanger



Unique in the market:
double condensation, not only
for heating but also
for domestic hot water
resulting in
low running costs

Top comfort

You expect Daikin, to deliver maximum **heating comfort and the domestic hot water you need in your home**. Our innovative gas-fired condensing boiler provides it all, exactly as you want it.

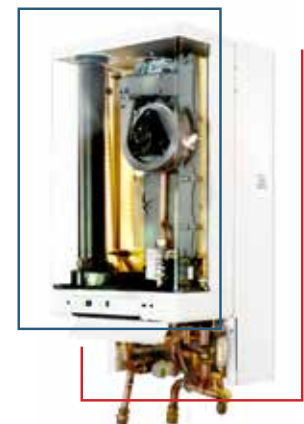
Modulating high-efficiency boiler: low running costs at all times

The Daikin gas condensing boiler is fitted with an advanced modulating controller that automatically adjusts the heat production of the boiler to maintain the correct temperature within the home and to optimise the efficiency of the heat exchanger. In addition, an **ECO comfort switch** is fitted so that in **ECO mode** the domestic hot water is quickly heated and made available in line with your consumption history whilst in **Comfort mode** it is available at all times.

Gas condensing boiler

Easy installation in minimum space

Installation time can be reduced to the minimum by using our **optional pre-assembled B-pack** which contains all the components for the functional installation in one module and fits behind the boiler. And as there are fewer parts, the Daikin condensing gas boiler is more reliable and easier to service.



B-pack

Beyond the ordinary Daikin total solutions

As the market leader in heating systems that use renewable or recovered heat, we have a very extensive product range that has been designed for optimal performance and provides a flexible and **total solution in almost every possible circumstance**. Whether you are looking for heating, cooling or domestic hot water production, Daikin has a system to suit.

Well known for our innovative Daikin Altherma air-to-water heat pumps, we also have hybrid heat pumps, ground source heat pumps, solar systems and air-to-air heat pumps. Contact your nearest Daikin supplier or visit our website at www.daikin.eu

Technical specifications

		Top range combi boiler			High range combi boiler			
		EKOMBG22AAV1	EKOMBG28AAV1	EKOMBG33AAV1	EKOMB22AAV1	EKOMB28AAV1	EKOMB33AAV1	
Gas Gas	Gas Consumption (G20)	m ³ /h	0,57 - 2,42	0,75 - 3,02	0,78 - 3,39	0,58 - 2,29	0,74 - 2,46	0,75 - 3,39
	Gas Consumption (G25)	m ³ /h	0,66 - 2,80	0,86 - 3,50	0,80 - 3,93	0,67 - 2,65	0,85 - 2,85	0,86 - 3,93
	Gas Consumption (G31)	m ³ /h	0,22 - 0,92	0,28 - 1,15	0,30 - 1,29	0,22 - 0,87	0,28 - 0,94	0,28 - 1,29
	NOx class		5			5		
Central heating	Nominal input rating (lower value)	kW	5,5 - 23,3	7,2 - 29,1	7,5 - 32,7	5,6 - 18,7	7,1 - 23,7	7,2 - 27,3
	Nominal input rating (upper value)	kW	6,1 - 25,9	8,0 - 32,3	8,3 - 36,3	6,2 - 20,8	7,9 - 26,3	8,0 - 30,3
	Output at 80/60°C Min - Nom	kW	5,4 - 22,7	7,1 - 28,4	7,4 - 32,1	5,4 - 17,8	6,9 - 22,8	7,1 - 26,3
	Output at 50/30°C Min - Nom	kW	5,9 - 23,8	7,7 - 31,1	8,2 - 35,0	5,9 - 18,5	7,6 - 23,4	7,8 - 27,1
	Minimum output at 40/30	kW	5,9	7,7	8,2	6,0	7,6	7,7
	Efficiency	%	107%	107%	109%	107%	107%	107%
	Maximum water pressure	bar	3			3		
Maximum water temperature	°C	90			90			
Domestic hot water	Nominal input rating (lower value)	kW	5,5 - 23,3	7,2 - 29,1	7,5 - 32,7	5,6 - 22,1	7,1 - 28,0	7,2 - 32,7
	Nominal input rating (upper value)	kW	6,1 - 25,9	8,0 - 32,3	8,3 - 36,3	6,2 - 24,6	7,9 - 31,1	8,0 - 36,3
	Nominal output	kW	5,9 - 22,7	7,7 - 28,4	8,2 - 32,1	6,1 - 21,0	6,6 - 26,2	7,9 - 31,5
	Domestic hot water threshold	l/min	1,5			1,5		
	Flow Rate at 40°C	l/min	10	12,5	15	10	12,5	15
	Flow Rate at 60°C	l/min	6	7,5	9	6	7,5	9
	Domestic hot water temperature (factory setting)	°C	60			60		
Casing	Colour		White - RAL9010			White - RAL9010		
	Material		Pre-coated sheetmetal			Pre-coated sheetmetal		
Dimensions	HxWxD	mm	590x450x240	650x450x240	710x450x240	590x450x240	650x450x240	710x450x240
Weight		kg	30	33	36	30	33	36
Gas Connection ø		mm	15			15		
Flue gas connection ø / Combustion air connection ø	Concentric Connection	mm	60/100			60/100		
Electrical	Power Supply	Phase / Frequency / Voltage	1~ / 50 Hz / 230V			1~ / 50 Hz / 230V		
	Electrical power consumption	Max.	W			105		
	Electrical power consumption	Standby	W			2		

Please consult engineering databook for country compliance

To select your flue gas system,
please refer to <http://fluegas.daikin.eu>

The present leaflet is drawn up by way of information only and does not constitute an offer binding upon Daikin Europe N.V.. Daikin Europe N.V. has compiled the content of this leaflet to the best of its knowledge. No express or implied warranty is given for the completeness, accuracy, reliability or fitness for particular purpose of its content and the products and services presented therein. Specifications are subject to change without prior notice. Daikin Europe N.V. explicitly rejects any liability for any direct or indirect damage, in the broadest sense, arising from or related to the use and/or interpretation of this leaflet. All content is copyrighted by Daikin Europe N.V.



Daikin products are distributed by:

FSC

ECPEN14-710